



The Largest International Database  
for Civil and Structural Engineers

# Media Kit 2023

Price List No. 13 - Valid from 1 January 2023

# About Structurae

Structurae is the only online database of international scope that covers the entire range of activity of bridge, civil and structural engineers. Engineers from around the world use Structurae to obtain information on bridges, tunnels, dams, skyscrapers, stadiums and many other types of structures.

**The database offers not only general information but also detailed technical data and numerous images for the individual structures—making Structurae a unique research and working tool for civil and structural engineers.**

Nicolas Janberg, chief editor and owner of Structurae, created the database in 1998 after obtaining his masters degree in civil engineering from Princeton University in order to promote publicly the work that civil engineers do for society.



## The Website

on average

**125,000 users**

**320,000 page impressions**  
per month

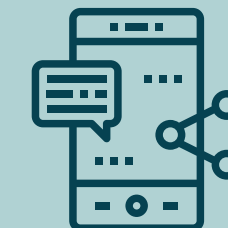


## The Newsletter

**16,000+ subscribers**

**30% unique open rate**

**7-10% unique click rate**



## Social Media

**20,000+ followers**

on Facebook, Instagram,  
LinkedIn and other social  
media channels

## Structurae includes...



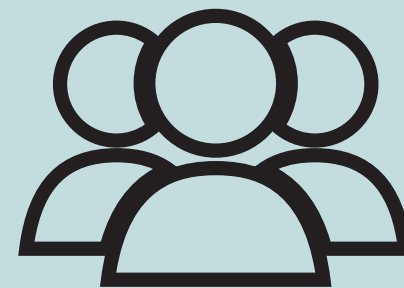
79,000+  
structures



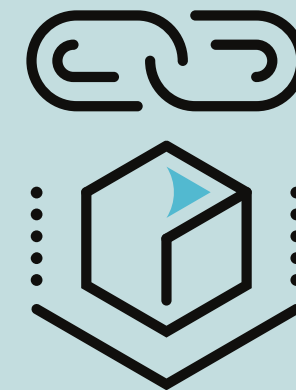
340,000+  
images



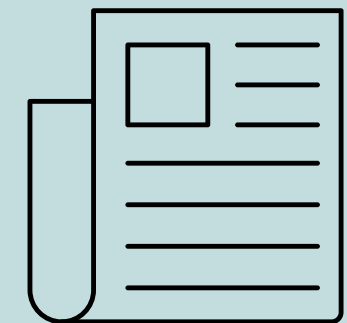
15,000+  
companies



11,000+  
persons



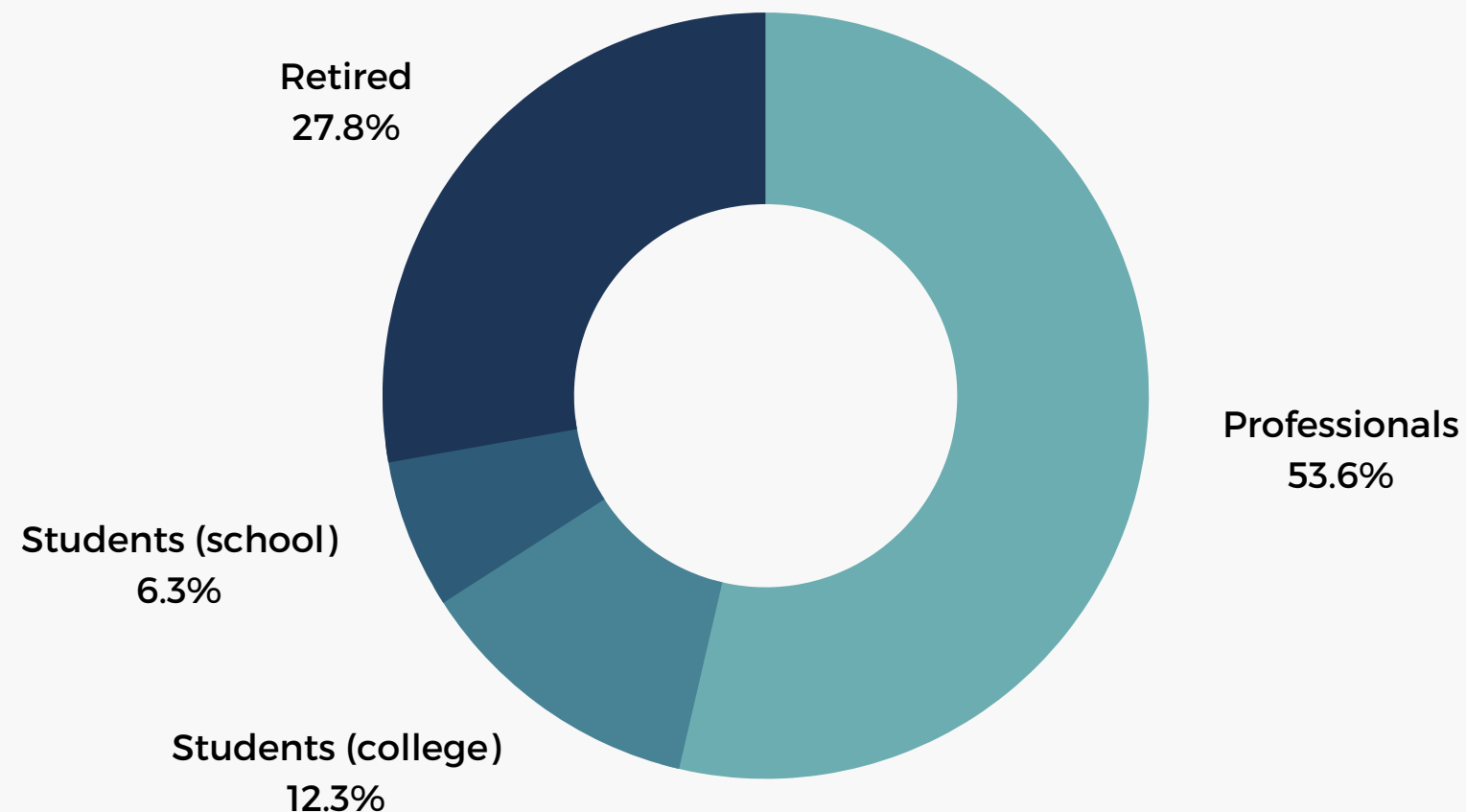
1,700  
products &  
services



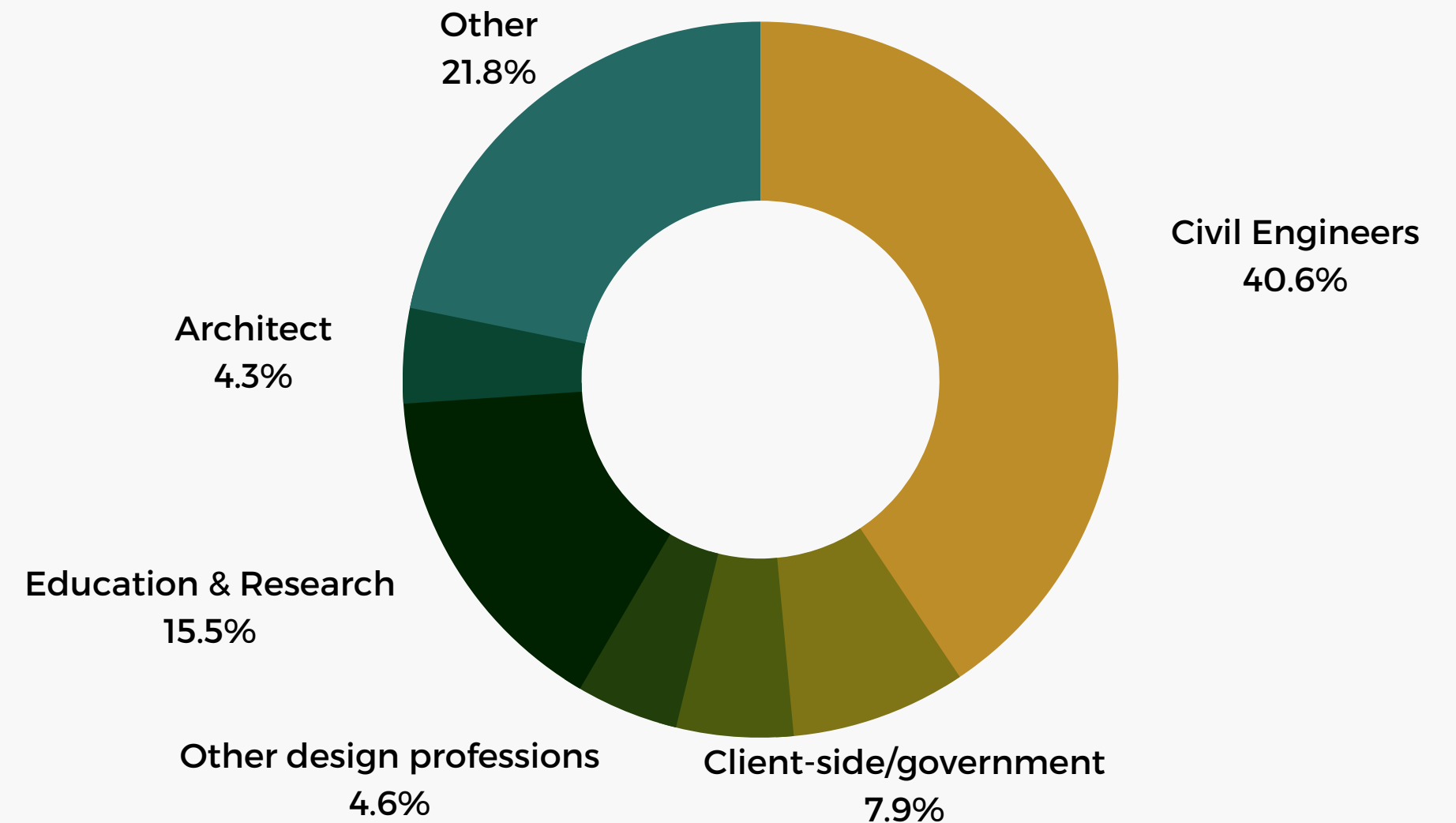
500,000+  
publications

# User Statistics

Structurae is used by bridge, civil and structural engineers who are practicing, teaching or studying as well as by architects, other construction professionals, and interested laypersons. Hundreds of thousands of pages are viewed on average every month.

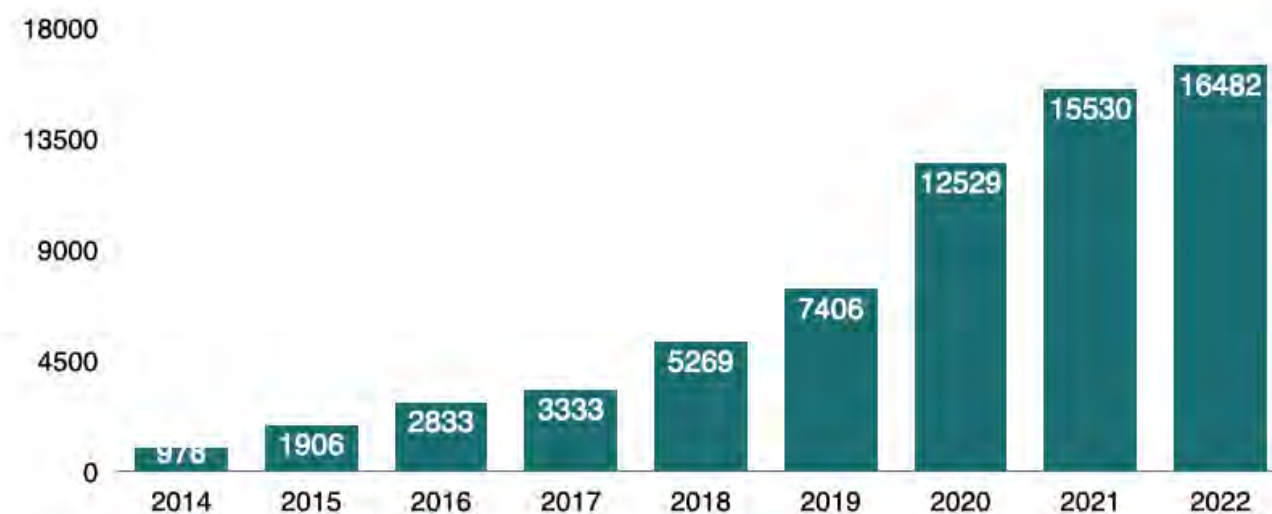
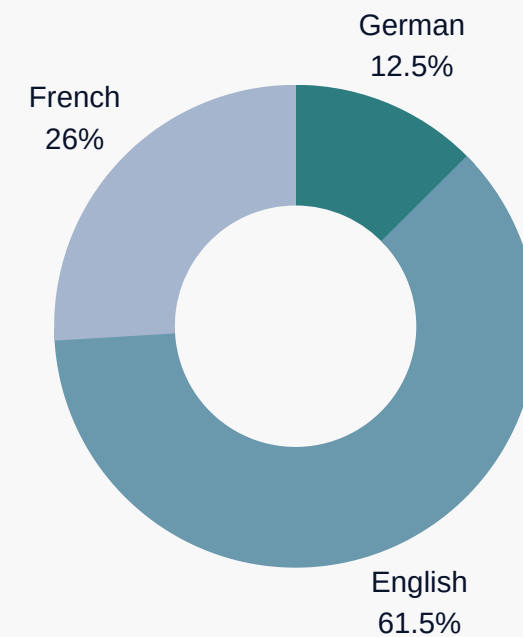


- Ø 125,000 users/month
- Ø 320,000 page impressions/month
- only 29% bounce rate
- 16,000 + registered users



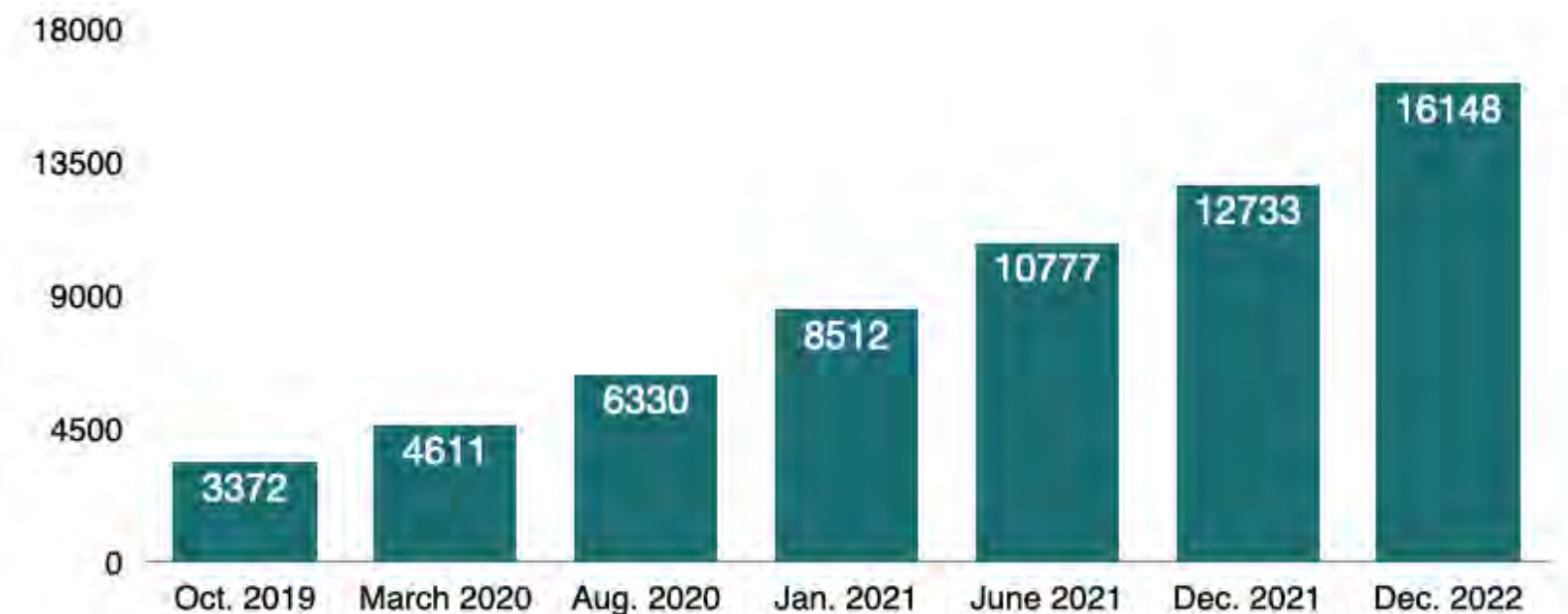
# Newsletter

The Structurae newsletter reaches more than 16,000 readers per month. We receive new newsletter subscriptions every day. It is available in three languages - German, English and French.



# Registered Users

Users can register on the website in order to use additional services. New users register every day. Reach your core target group in civil engineering and architecture with your advertising messages in exactly the right context, when they are researching relevant information for daily work.



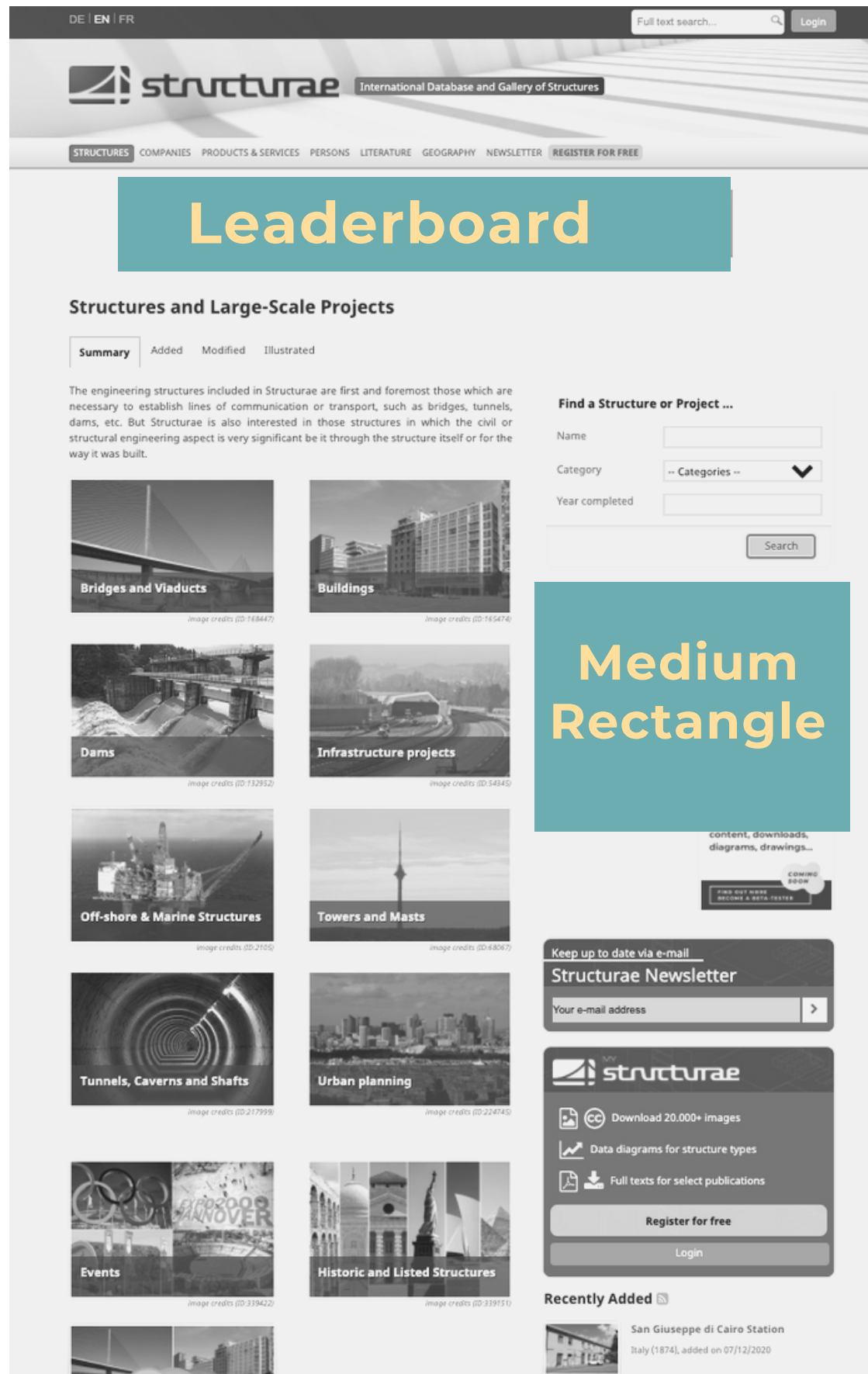


---

# Advertising Formats

WEBSITE & NEWSLETTER





# Banners

## Homepage Tile

- Only on homepage
- 300x250 pixels

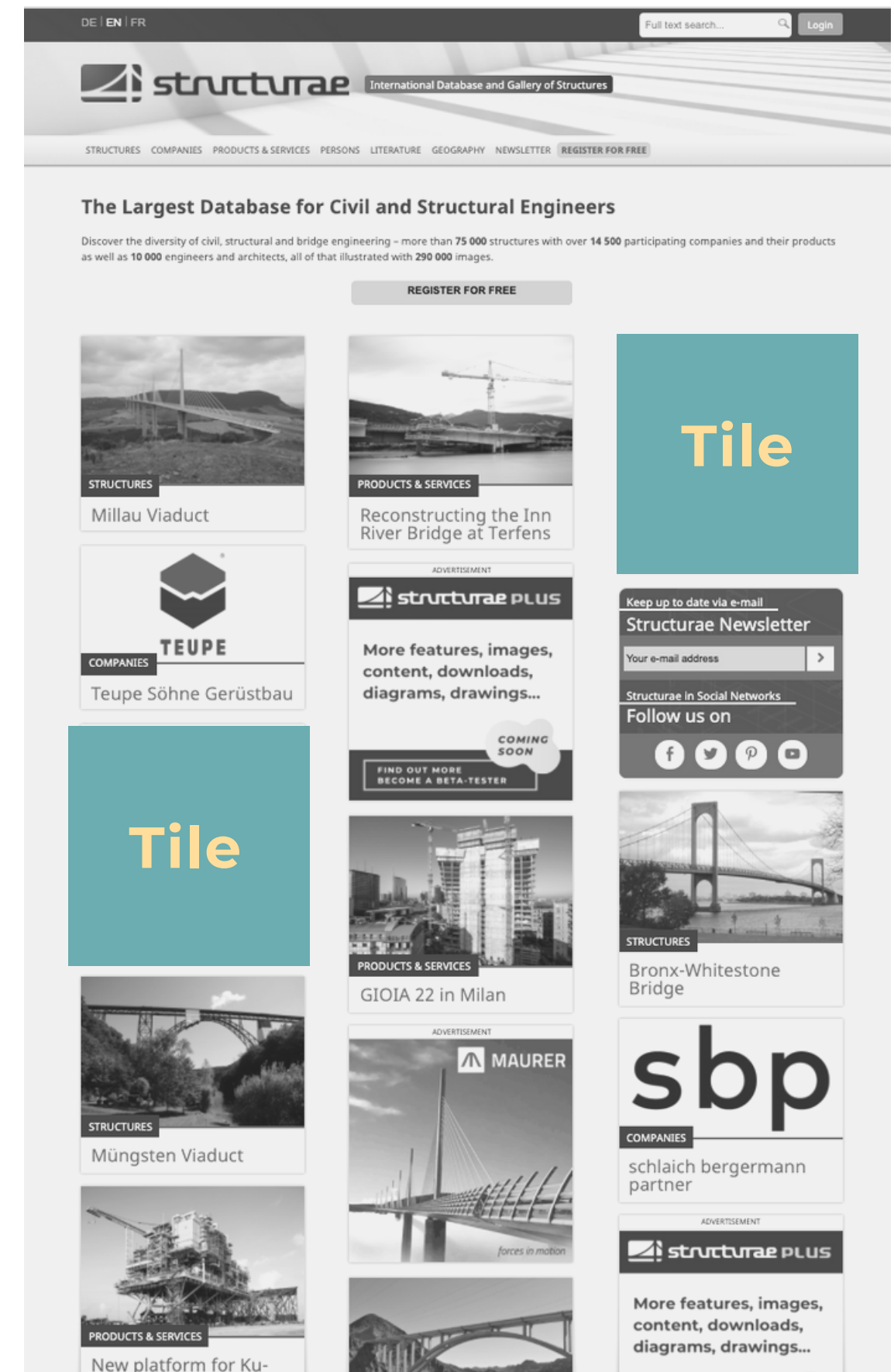
## Leaderboard

- Every page except homepage
- 728x90 pixels
- Mobile: 320x50 pixels

## Medium Rectangle

- Interior pages
- 300x250 pixels

100% target group relevancy  
Reach the decision-makers in the  
construction industry during  
their daily work routine.



Dear Nina Schleidt,

They are less susceptible to maintenance work, and cheaper to build, and — according to some engineers — they offer greater design freedom than conventionally supported bridges. Yes, we are talking about **integral bridges**. Of course, we have already listed numerous integral and semi-integral bridges on Structurae with technical data, images, and a lot of other information, and we keep adding more.

In the section on "[Bridges by support conditions](#)" we have included the following categories of bridges:

- [Integral bridges](#)
- [Semi-integral bridges](#)
- [Conventionally supported bridges](#)
- [Oblique bridges](#)
- [Partially oblique bridges](#)

This part of Structurae is only available to logged-in users, but you can register for free at any time.


[Register for free](#)



**Sunniberg Bridge (Switzerland)**

This five-span extradosed bridge with a very slender deck has neither joints nor bearings. The roadway is supported on a thin continuous slab with slim edge girders and forms a static and structural unit with the pylons and abutments. [>> more](#)

## Text Ad



**NEW: Save Favorites**

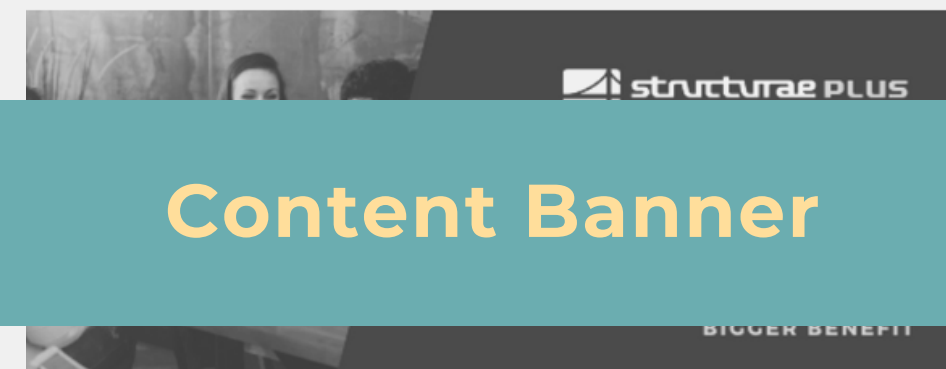
You can now save your favorite media files on Structurae!

Simply click on the star button in the right top corner of the images you like. You can access your saved favorites in the *My Structurae* dashboard.

You will be able to save your favorite structures and companies soon!

[Register for free](#)

**d more exciting news:** we are currently working intensively on the development of new functions, all of which will be part of **Structurae Plus**. You may have already discovered new structure categories and content on the Structurae website that are not yet available. It is precisely this content that will also be part of Structurae Plus.



With **Structurae Plus** you will not only have access to images, diagrams, data, and much more information, but also the **required permissions to download and re-use** the data and many images. New and enhanced features complete the package.

[Become a beta-tester and help shape Structurae Plus!](#)



## Newsletter

### Content Banner

- 600x150 pixels

### Text-Ad

- Logo/image
- Text
- Button (if needed)

### Stand-alone Newsletter

- Design and translation possible
- Price on request

**16,000+**  
subscribers



---

# Profiles

COMPANY PROFILES, CASE STUDIES AND PRODUCT DESCRIPTIONS

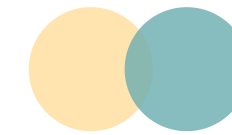


# Your company on Structurae

Present your company and advertise your products and services with a comprehensive company profile on Structurae.

Take advantage of all the options and create an informative company profile compared to the standard entry.

- Generate traffic to your website and important business leads
- Reach engineers and architects in a thematically relevant environment
- Actively shape the presentation of your company on Structurae
- Share information, e.g. contact details
- Document reference projects in detail



**Logo**



**Contact information**



**Assigned categories**



**Weblinks**



**Short and long description**



**Products & Services**

# The different profile options\*

STANDARD	MINI	MEDIUM	MAXIMUM
<ul style="list-style-type: none"><li>• company name and logo</li><li>• contact info visible only for registered users</li><li>• link to reference projects**</li></ul>	<b>Entry-level version</b> <ul style="list-style-type: none"><li>• short + long description</li><li>• logo</li><li>• contact info visible to all users</li><li>• 1 case study or product description***</li></ul>	<b>Complete company profile</b> <ul style="list-style-type: none"><li>• short + long description</li><li>• logo</li><li>• contact info visible to all users</li><li>• 6 case studies and 3 product descriptions***</li></ul>	<b>Complete company profile</b> <ul style="list-style-type: none"><li>• short + long description</li><li>• logo</li><li>• contact info visible to all users</li><li>• 12 case studies and 6 product descriptions***</li></ul>
FREE OF CHARGE	129 EUR	499 EUR	899 EUR

\* The subscription is valid for one year and is automatically renewed for another year if you do not cancel in writing at least 8 weeks before the subscription period expires (by email to: [service@structurae.de](mailto:service@structurae.de))

\*\* If the respective project and the role of involvement of the company in its design or construction is provided and the project is already listed. The processing of reference lists or databases is not included.

\*\*\*Each additional case study or product description: 60 EUR EXTRA



# This could be your company profile

Tabs for additional pages for addresses, products, case studies, bibliography and literature

MAURER SE

Profile Contact Info Reports



Short description

What keeps us moving

MAURER SE has been an independent family-owned company. The company's history of construction and this still marks the character of the company. MAURER SE is one of the technological world market leaders in this

Categories

- Execution
  - Contracting services
  - Specialist contractors
    - Steel construction
- Equipment
  - Bearings
    - Bridge bearings



Company logo

Contact Information

Website: MAURER SE  

Address: MAURER SE  
Frankfurter Ring 193  
80807 Munich  
Germany

Phone: +49 (0) 89 30 90 10 10

Fax: +49 (0) 89 30 90 10 11

E-mail: [info@maurer.eu](mailto:info@maurer.eu)

Primary contact info

Categories

- Modular expansion joints
- Seismic joints
- Railway joints
- Architectural joints

Controlling forces in buildings, bridges and complex dynamic structures is a fundamental part of the company's business. The forces can be affected by earthquakes, traffic loads or climatic influences and they are controlled by using carefully selected special products such as expansion joints, structural bearings, vibration dampers or seismic devices to prevent damages.

Long description

Acceleration and motion, another line of business is the design and construction of roller coasters for amusement parks and Ferris

The forces in the common purpose of all of the products in the company claim „forces in motion“.

The products and solutions offered by MAURER are especially characterized by longevity, quality, and safety. MAURER as a company and as a brand concentrates on being clearly

Related companies, relevante websites and publications....

## Products and Services

### XL1-Expansion Joint

MAURER XL1-Expansion Joints for road bridges with MAURER strip seal and wavelike coverage have been designed for an admissible movement of 100 mm. ... [\[more\]](#)



Products & services

### XW1-Expansion joints

Expansion joints type MAURER XW1 represent the further development of the well-proven MAURER single seal expansion joint system. The increased move ... [\[more\]](#)



## Recent Reports & Case Studies

### New bridge Hisingsbron (Gothenburg): Noise-reduced expansion joints with special "tunneling"

A streetcar running on a bridge is not uncommon. However, this presents a challenge in Gothenburg since long ramps lead to the bridge construction. ... [\[more\]](#)



### Record bridge in Shanghai with expansion joints from Munich

While the Hutong Bridge in China is only the second longest-spanning cable-stayed bridge, and only has the second highest pylons, it is much larger ... [\[more\]](#)



### 400-ton Pendulum in the Onion

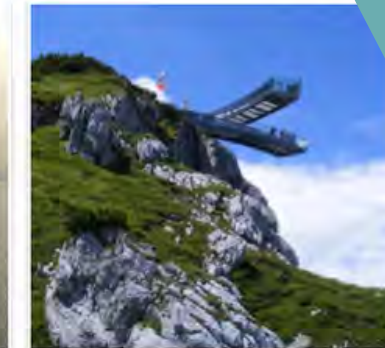
In Baku, the capital of Azerbaijan, the tallest building in the Caucasus was



## References and Selected Works



ridge



AlpspiX

Selected references

## Structures & Projects

Participation in the following structures and projects:

- AlpspiX (2010) 
- Alsen Bridge (1998) 
- Arcul de Triumf (1936) 
- Arroyo de las Piedras Viaduct (2007)
- Baku Tower (2021) 
- Beeckerwerth Bridge (1990) 
- Bogibeeel Bridge (2018) 
- Botlekbrug (2015) (2015) 
- Bridge SG26 (2019) 
- Cable Truss Bridge over the Middle Ring (1985) 
- Çayırhan Bridge (2019) 
- Donau City Tower 1 (2014) 
- Donnersbergerbrücke 
- Dubai Water Canal Bridge (2016) 
- Eching Motorway Bridge
- Forchheim Pedestrian Bridge (2002)
- Great Mosque of Algiers (2019) 
- Gustav Heinemann Bridge (2005) 
- Gwangan Bridge (2002) 
- Helsinki Olympic Stadium (1938) 

Structures & projects



# Case Studies & Products

Present your products & services with detailed descriptions and case studies on Structurae.

**Only available in a combination with a company profile.**

Short description

Product images

Long description

### Record bridge in Shanghai with expansion joints from Munich

Description

Media

References

The Hutong Bridge in China is only the second longest-spanning cable-stayed bridge, and with its two highest pylons, it is much larger than the firsts, and can therefore be called the largest cable-stayed bridge. The expansion joints needed for such a bridge are no exception: they were designed and manufactured in Munich, Germany.

Once again, China has built a record bridge: since July 1, 2020, the Hutong Bridge with a length of 11 km has been connecting Shanghai at the south bank of the Yangtze delta and Nantong at the north bank. For the main bridge featuring a span width of 1,092 m, swivel-joint expansion joints were required that allow for a movement of almost 2 meters in longitudinal direction at both bridge ends. The expansion joints were manufactured at MAURER in Munich.

The "Hutong Yangtze River Bridge" ("Hu" is the abbreviation for Shanghai, "Tong" for Nantong) is a combined railroad/road bridge. The double-decker bridge over the Yangtze is 11 km in length. The bridge deck consists of a steel framework girder with four tracks, two of which are suitable for velocities up to 250 km/h (155 mph). The road traffic is moving on three lanes in each direction.

Key features characterize the total structure: in the north, a 336-m-long steel arch bridge, in the south, the "largest" cable-stayed bridge worldwide. With a main span width of 1,092 m it is only 12 m shorter than the current record holder, the Russky Bridge (Russia). The two 325-m-high pylons are the second largest bridge piers in the world, surpassed only by the Millau Viaduct (France). Since the road on the Russky Bridge features 4 lanes only, the Hutong Bridge in China has now been declared largest cable-stayed bridge in the world. All of the above-mentioned record bridges – Russky, Millau, and now Hutong – are equipped with expansion joints from MAURER.

#### Expansion joint with large transverse movements

Expansion joints are installed at the bridge ends to accommodate longitudinal

#### Services

- Equipment
  - Joints
    - Roadway joints
    - Modular expansion joints

#### Offered by

- MAURER SE

#### References

Hutong Yangtze River Bridge  
Nantong, Jiangsu, China

#### Structure Types

Cable-stayed bridge with semi-fan system

Three-lane bridge

Available with Structurae Plus

Find out more

Login

About this data sheet

Product-ID: 7679

Published on: 07/08/2020

Last updated on: 07/08/2020

#### Keep up to date via e-mail

### Structurae Newsletter

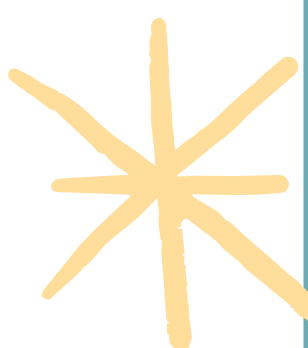
Your e-mail address

Product Categories

Company name & logo

Reference structures

Structure categories



### Bridge improves infrastructure

The new Hutong Bridge will considerably change the traffic flows in the regions around Shanghai and Nantong. The nearest road bridges are 40 to 45 km away, the nearest railroad bridge crosses the Yangtze at a distance of 200 km upriver. In this way, some regions could be connected to the railroad network in the first place. Travel time from Nantong to Shanghai is intended to be reduced from two hours to one.

Construction of the bridge started in June 2016. The expansion joints were installed at the end of 2019. The bridge was opened for traffic on July 1, 2020.

#### Inquiry for further information

Your Name: \*

Your company

E-mail: \*

Your message: \*

Enter the characters you see: \*

Fields marked with a red asterisk \* must be completed for the message to be sent.

Submit

# Additional Services

We offer more services in addition to the basic offers. This way, we can support you in producing texts and banners as well as putting together references.

**Just contact us - we will find a solution.**

- Creation and compilation of short and long descriptions, product descriptions, case studies
- Translation of all texts (German, English, French)
- Regular review of your company website, newsletter, etc. for new reference projects
- Design and creation of banners

All prices on request

Please indicate whether you would like to acquire the usage rights for all reports.





---

# Price Overview

COMPLETE PRICE LIST



# Banner

Leaderboard or  
Mobile Leaderboard  
39 € CPT

Combination of Medium  
Rectangle & Square  
59 € CPT

# Newsletter

**Content Banner**

German Newsletter	290 €
English Newsletter	690 €
French Newsletter	490 €
Combo DE+EN+FR	990 €

**Text Ad**

German Newsletter	290 €
English Newsletter	690 €
French Newsletter	490 €
Combo DE+EN+FR	990 €

**Stand Alone NL** on request

# Company Profile

Minimum	129 €
Medium	499 €
Maximum	899 €

---

Additional Product Description or Case Study	60 €
--	------

Additional combinations on request

## Contact us

We are looking forward to your message. Of course, we would be happy to advise you personally on which form of advertising best suits your needs and expectations.

### POSTAL ADDRESS

Structurae  
c/o Nicolas Janberg  
Dresdener Str. 110  
10179 Berlin  
Germany  
[www.structurae.net](http://www.structurae.net)



### NICOLAS JANBERG

Founder & Chief Editor  
[njanberg@structurae.de](mailto:njanberg@structurae.de)



### NINA SCHLEIDT

Marketing & Sales  
[nschleidt@structurae.de](mailto:nschleidt@structurae.de)